

*chonica* pulp paper exhibition system

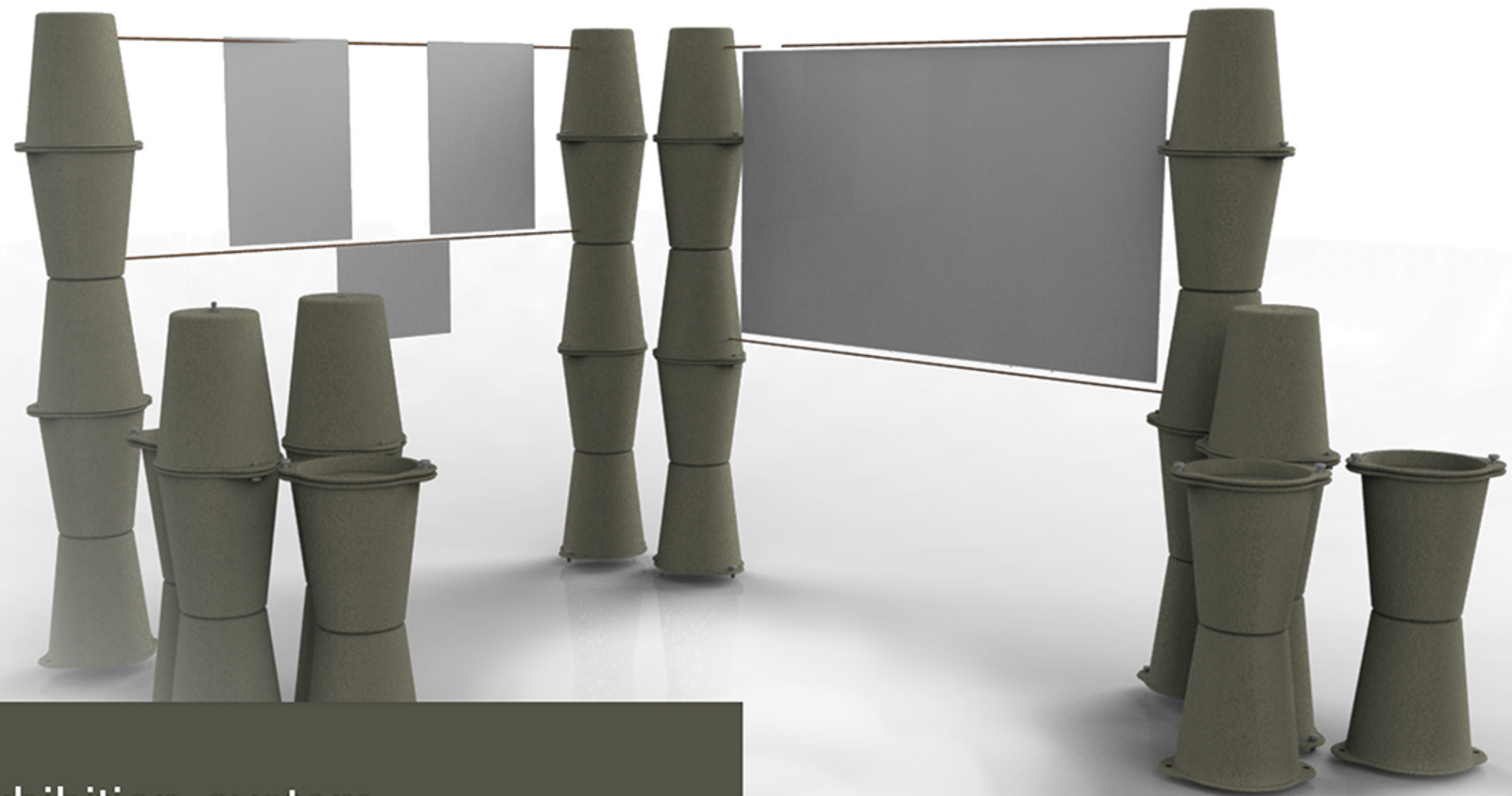
Ceyda Bas



## Chonica inspired from egg boxes (pulp paper)

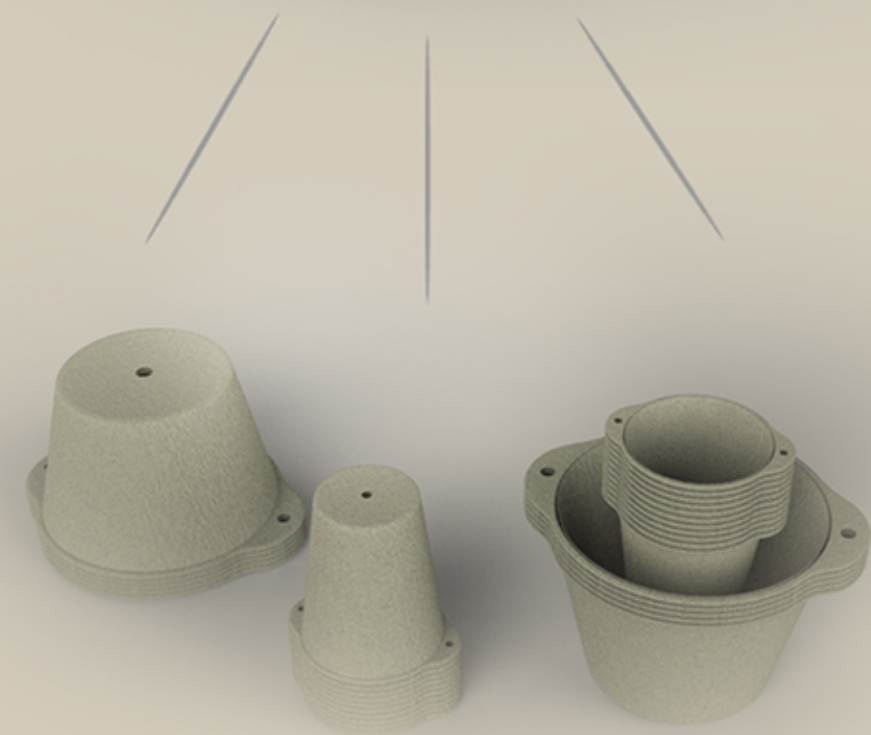
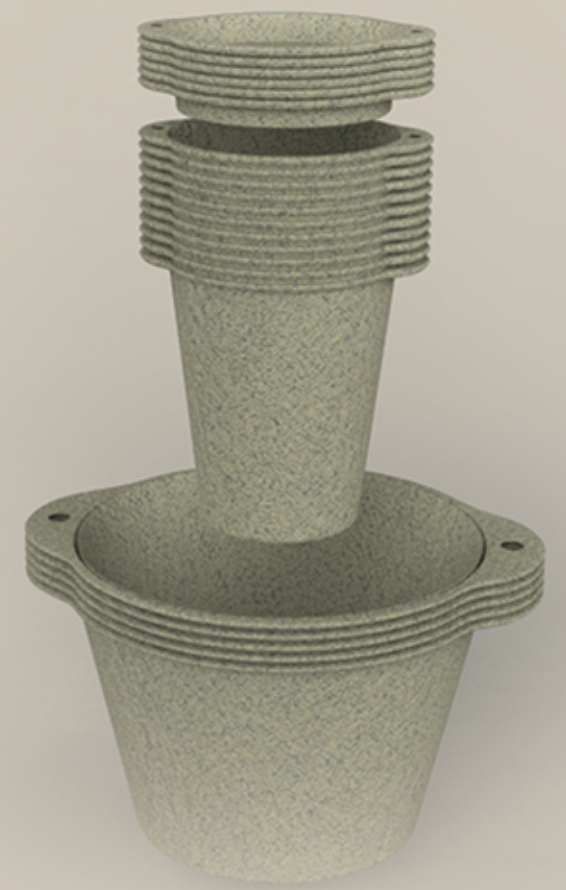
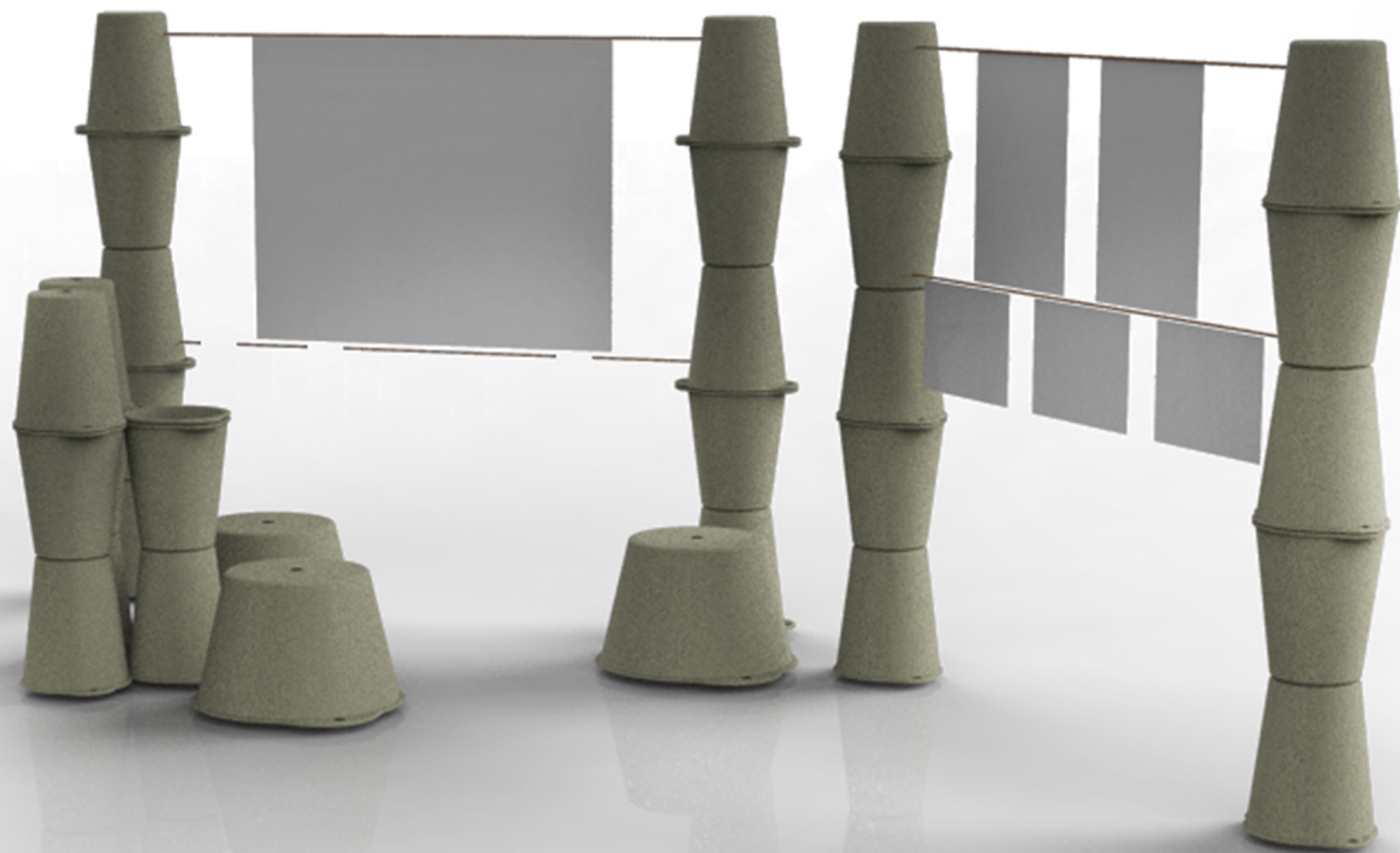
It made by recycled paper like the kind used in egg box paper which is a basic mock-up material in design schools and lots of paper waste come up within a one semester (year...etc..). Chonica suggest to re-use them as a exhibition system. And with a nod to its egg-crate inspiration, there is a new system design which is **lightweight, transportable, biodegradable and recyclable.**

Normally, paper is not good construction material, but this structural design of each piece has been carefully calculated to provide possibility of higher system.



*chonica* pulp paper exhibition system

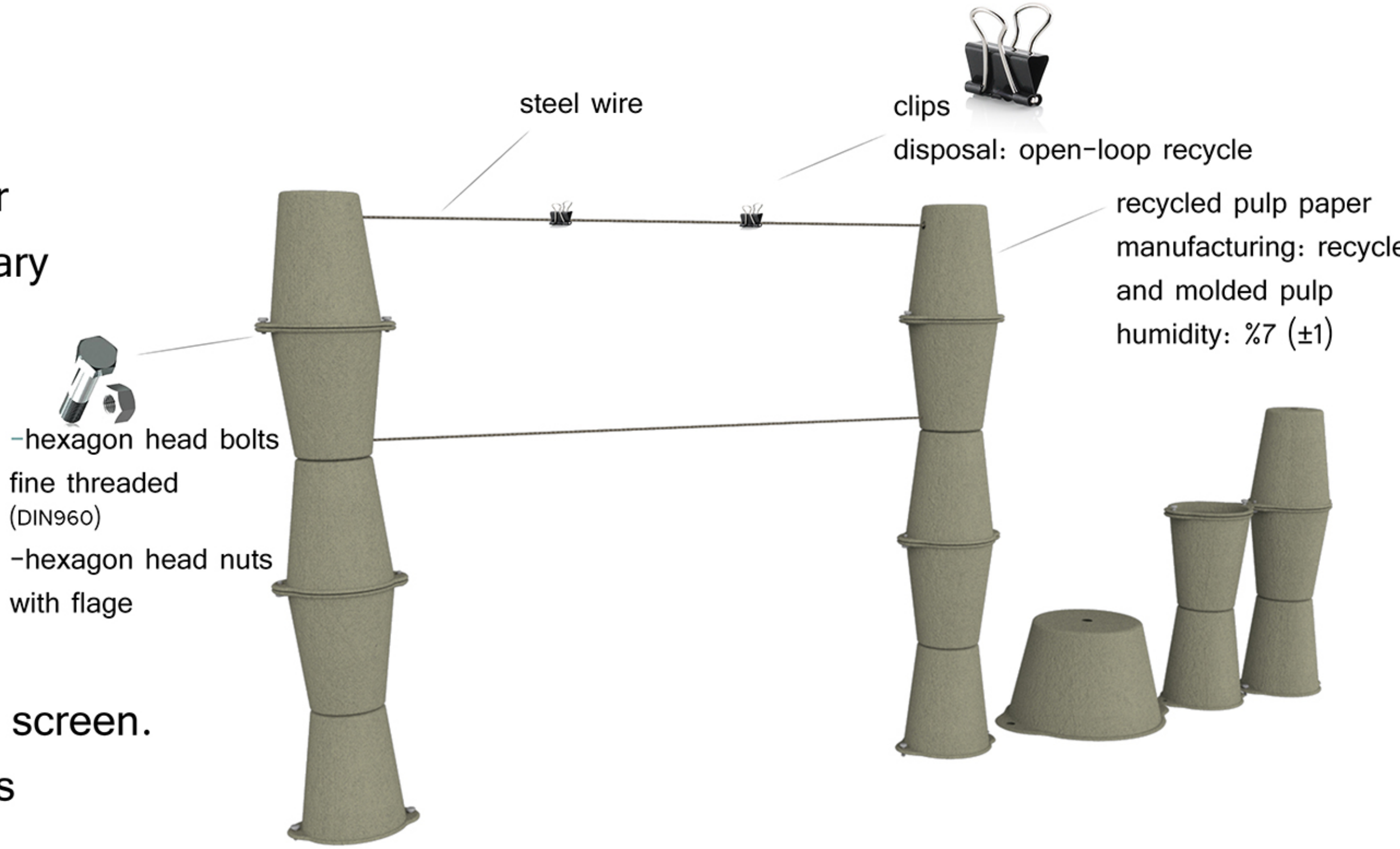


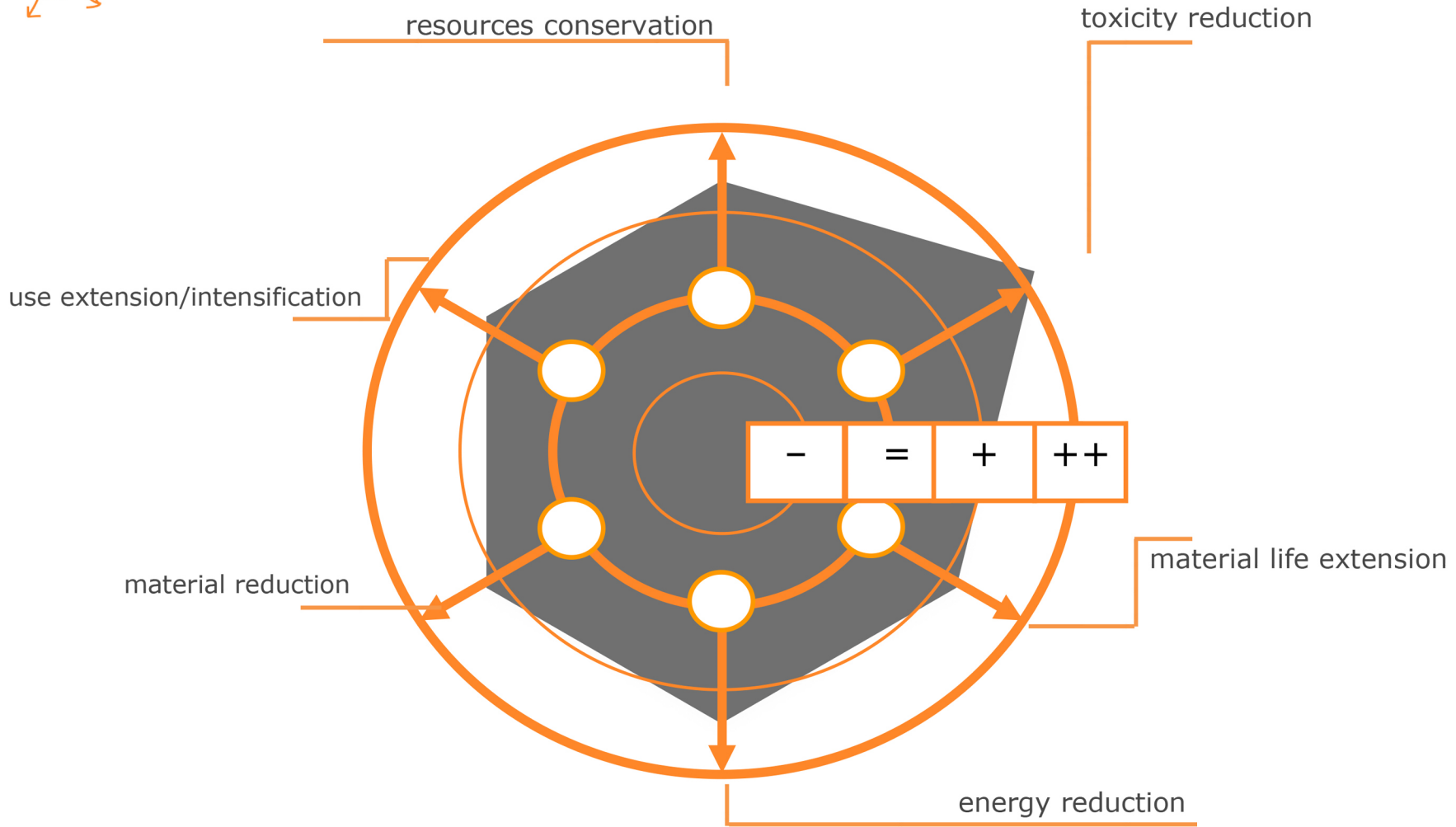


*chonica* pulp paper exhibition system



System occurred by mainly recycled pulp paper modules and auxiliary elements which are steel wire, bolts and nuts. Stretched wire can be use for hangs to posters and also projection screen. Pulp paper modules provide to exhibit models and prototypes.





**PRIORITIES**

HIGH=H  
 MEDIUM=M  
 LOW=L  
 NONE=N

**IMPROVEMENT**

- : WORSENING  
 = : NO CHANCE  
 + : IMPROVEMENT  
 ++ : STRONG IMPROVEMENT

	resource conservation	toxicity reduction	material life extension	energy reduction	material reduction	use inten./ext.
Priority	P: MEDIUM	P: MEDIUM	P: HIGH	P: LOW	P: MEDIUM	P: HIGH
Improvement	I: INCREMENTAL	I: RADICAL	I: INCREMENTAL	I: INCREMENTAL	I: INCREMENTAL	I: INCREMENTAL

